

PUBLIC HEALTH WARNING: REPORT DAY-BITING MOSQUITOES

Please call the **BUTTE COUNTY MOSQUITO & VECTOR CONTROL DISTRICT** to schedule an inspection at **(530) 533-6038**

INVASIVE MOSQUITOES FOUND IN YOUR AREA

Aedes aegypti

Yellow Fever mosquito



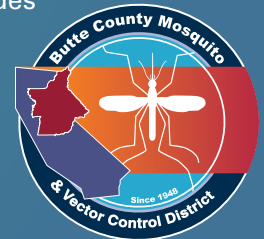
Actual Size: About ¼ inch long

WHY THE CONCERN?

Aedes aegypti is an invasive mosquito in California that is capable of transmitting several diseases including Zika, dengue, and chikungunya. While there have been no local transmissions detected to date, the identification and control of this invasive mosquito is important to protect public health.

About *Aedes aegypti* mosquitoes

- Small dark mosquito that bites during the day.
- Prefers to dwell in urban areas indoors and outdoors.
- They especially like to bite ankles, wrists and elbows.
- They lay eggs in small sources of water around homes.
- They are very difficult to control.
- They complete their life cycle in 7-10 days. The adults live for about 3 weeks.
- Invasive *Aedes* are “container breeders”. Individual eggs are glued to the sides of containers. Eggs are resistant to drying out and can survive for many months until water covers them.



www.buttemosquito.com

BREEDING SOURCES THAT NEED YOUR ATTENTION TO AVOID INVASIVE MOSQUITOES

- Remove saucers under plants
- Cover bins, buckets, and tubs with fitted lids
- Remove miscellaneous containers from yard
- Remove old tires from yard
- Fill rims of pots with sand
- Re-direct sprinklers so containers are not filled
- Keep recyclables in covered container(s) that drain
- Properly modify (screen) or remove rain barrels
- Empty birdbaths/fountains (every 3 days)
- Empty/refill pet drinking water (every 3 days)
- Clean out/drain rain gutters and drains in yard
- Remove plants that hold water in yard
- Keep potential sources dry when not in use



Plant saucers



Buckets



Bird baths



Tires



Toys left outside



Pet bowls outside



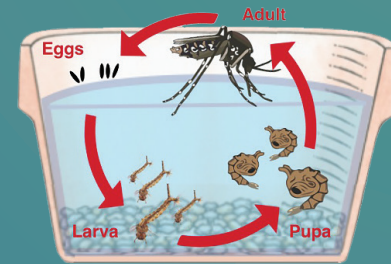
Wheelbarrow



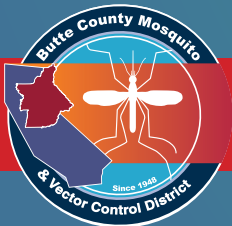
Septic tanks



Plant axils are where leaf meets stem



Aedes aegypti is a 'container breeder' that glues eggs to the sides of containers



The Butte County Mosquito & Vector Control District is currently conducting door-to-door inspections, setting traps and making treatments in your neighborhood to control these mosquitoes.

www.buttemosquito.com



(530) 533-6038